

12TH NOVEMBER 2022 | "WYREEMA" BERRIDALE | COMMENCING 9AM

A successful day, with 416 lots sold, multiple vendors, 143 registered bidders !

The rain stayed away for the majority of the day and the sale was conducted under cloudy conditions with warm temperatures. There was a vast array of inventory items and all who attended had a great day out. Plenty of fantastic food provided by Tony and his team from Roses Restaurant and the prefect cup of coffee was provide by David @Coffee 2630.

VENUE	220-222 Middlingbank Road, Berridale NSW 2628
ACCOUNT	G Zulian and C Faulkner + Outside Entries
INSPECT	8am on the the day or as otherwise pre-arranged
REGISTER	8am on the day or via pre-registration. To pre-register for this auction, please contact our office, supply a scanned copy of your driver's license.
AUCTION	Commencing at 9am Saturday 12th November 2022
CATERING	Provided by Tony Nassar - Roses Restaurant
TERMS	Bidding card system ID required
PAYMENT & PICKUP	On the day
PAYMENT METHODS	Cash & Bank Cheque or Personal Cheque (Must be pre-approved). EFTPOS facilities maybe available on the day. To register for pre-approval to pay with a Personal Cheque, please click here .
BUYERS	Please refer to terms and conditions

Disclaimer: We make no representation and give no warranty as to the accuracy of the preceding information and do not accept any responsibility for any errors or inaccuracies in, or omissions from, the information contained herein (whether negligent or otherwise) and we shall not be liable for any loss or damage howsoever arising as a result of any person acting or refraining from acting in reliance on any information contained herein. The above information has been furnished to us by a third party. We have not verified whether or not that information is accurate and do not have any belief one way or the other in its accuracy. We do not accept any responsibility to any person for its accuracy and do no more than pass it on. All interested parties should make and rely upon their own inquiries in order to determine whether or not this information is in fact accurate. No reader shall rely solely on the information contained in this document as it does not purport to be comprehensive or to render specific advice. This disclaimer does not purport to exclude any warranties implied by law which may not be lawfully excluded.

Please also note that all photographs relating to this sale are INDICATIVE ONLY and do not show how lots will be sold on the day.

Inventory

VEHICLES	Daihatsu dual cab truck; Bedford tipper; Toyota weathershield guard; Assorted vehicle lights; 4 speed gearbox and clutch Toyota Celica (mid 70's); 80 series landcruiser mudflaps & hub covers; speakers;
----------	---

RARE UNIQUE ANTIQUES & COLLECTABLES	Dog & rabbit traps; Copper (500mm diameter x 400mm high); 1917-20 circa scales (made in England); P51D Mustang Model (Hand made by Rick Jones, 1800mm long, 2300mm wingspan); Fordson tractor fuel tank (from London, circa early 20th century); Lister stationary engine; 2 lanterns (made in Germany, imported into England for early steam trains, includes brackets, 580mm high, light casing 210mm in diameter)
HORSE ITEMS, SADDLERY ETC	Pony sulky (circa 1930s, made in England, pulled by pony, i.e. Shetland pony, has working brass bell button); Early 20th century turnout buggy (made by W. Dwyers in Wollongong, was bought by Parsons & Co)
BUILDING MATERIALS, WORKSHOP EQUIPMENT & TOOLS	Steel cabinet; Steel shed; Steel sheets; Painting spray gun w hoses, etc; Oxy hoses; Oxy cart; 40 KVA gen set; Hot water boiler (diesel, gas); Steel lathe; Sand blasting pot; Air pump; Stationary engine (not running); Trojan workhorse deck only; Steel strapping trolley and associated tools; 19mm strapping; Work lights; Blower; Oxyacetalene reel; Bench drill; Triton work bench; Small electric compressor; 2 x lockable filing cabinets; Unopened ceiling fan; Double glazed glass panel 1.2m x 0.9m; Assorted laser levelling equipment; Gerni pressure washer; 4 x refrigeration panel; Drop saw; Assorted cut bricks; 1 x security mesh panel; Orange 3-phase electric cable; Steel pallet 2.5 tonne rated; Concrete gibblets (require welding); Assorted cement and mortar mix; Ozito mouse grinder; Wagner spray gun; Oxy hoses on reel; Large pump controller; Assorted cutting discs; assorted circular saw blades; assorted welding bits; heat gun & hose; cutting tips: ¾ Gyprock easy flow compound; Manual tile cutter/ scorer; storm drain 1m long with grate top x 5; screen door closer x 2; Window panels x 2; Assorted floor jacks; 900 x 900 window frame reveals; cement mixer; router; planing jig; power board; workshop shelves; Electric Cement mixer; Assorted bricks; Wheeled 3 draw mobile tool work caddy; Dewalt stand for drop saw; Hitachi Router; Weldmate Welder;
FARMING MACHINERY, EQUIPMENT & MATERIALS	Spray tank (red); Stainless steel water tank; McCormack (red) tractor; Ferguson tractor; International tractor; Post driver; Green 1,000L (TBC) spray unit with retractable hose; Fuel tank; CASE tractor; 100L Hardi spray tank (no gun); Various pressure pumps; CIG Transmig 195 Rural Pak Welder with transportable wire feeder; 3-phase air comp; Honda pump parts; 5HP Honda pump; 22HP Kohler engine; IHI Excavator piped (recently rebuilt head up); Tandem axle farm trailer with manual winch (no floor); Moorhouse carryall; 2 x steel cattle troughs; Moorhouse posthole auger; Tractor tyres; Fuel tank on feet w pump; Ute fuel tank; Monopump HV/HF suit dairy; Rapidspray 400L fuel tank; 44 drum trolley; 3 x fuel tanks; Fuel tank stand; 20 panel portable sheep yard w trailer; Jarrett disc plough; Homemade carryall; Swivel blade w positrack mount; Harrows; International 596 2WD tractor with new cartridge fuel system; Massey Fergusson 455 100HP tractor w 8700 frontend loader; 4 in 1 bucket; Forks; 6ft HD Howard PTO slasher; Starter motor 24V; Pump; HV Belt drive pump; Assorted grease guns; Generator output metre; Assorted Daihatsu parts & bushes; 5 tonne bottle jacks; Wire spinner; 6x4 trailer tarp; air hose; trailer jockey wheel; Honda 4 wheel bike 3524kms; 1 x 25kg bag Croplift 15; Fertiliser 19:12:0:10; 25kg Haifa White Clover; extended heavy duty towball; Coil trolley;
OUTDOOR GARDEN EQUIPMENT	2 x 8.5 kg gas bottles; Steam cleaner; Small round BBQ; Various BBQ plates; Foldable table legs; Assorted deckchairs; Self propelled lawn mower; Electric whipper snipper; John Deere X595 4x4 62inch independent hydraulic deck lawn mower; Dog kennel; Assorted irrigation fittings; Stainless steel beer keg mail box; adjustable wheeled manual grass seeder; shade cloth; 2 plate hotplate; Homelite electric garden edger; Large BBQ on wheels;
HOUSEHOLD ITEMS	Stirling electric cooktop; Stirling in wall oven; Mitsubishi fridge; Microwave; TV antenna; Hellar ice fan; 2 x fibreglass bath; Blue fan; upright heater; Everhot Wood Fired Stove; 49 inch HD LCD LED Television (in box); Fold up single bed; 900 x 600 Timber painting frame;
MISCELLANEOUS	Treadmill; 3 x suitcase; Commerical meat slicer; 2.5HP boat engine; Alternator for Plane (Piper, Reco'd and certified); Tree climbers sling (not certified); wet weather gear assorted; HD Plastic fold up picnic table & seats; 2 plate hotplate; Gym Weights Station
OUTSIDE ENTRIES	
1. LES AND STEPHANIE TAYLOR	Toyota nudge bar (from 150 series Prado Land Cruiser); Quad bike trailer tipper; 3 point linkage arms; Meat band saw; 3 point linkage bucket

2. MARK
NORLING

Snowy Mountains Authority Hand Rendered Cross Sections Snowy Mountains Scheme Circa 1969

3. L N CLARKE

1994 Mitsubishi FM557JS Truck with 25ft tray. Registered until February

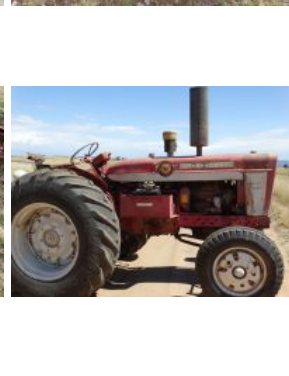
4. M D MCPHIE

8 x 5 Tandem Axle Box Trailer with electric brakes and Electric Winch

5. S REID

2003 Crisfloat 2 horse straight load float - registered

PLEASE NOTE: ALL PHOTOGRAPHS RELATING TO THIS SALE ARE INDICATIVE ONLY AND DO NOT SHOW HOW LOTS WILL BE SOLD ON THE DAY. THERE MAY ALSO BE DUPLICATE PHOTOS SHOWING DIFFERENT ANGLES OF THE SAME ITEM FOR REFERENCE PURPOSES.



Vendor - C Faulkner





Vendor C Faulkner



Vendor C Faulkner



Vendor C Faulkner



Vendor C Faulkner

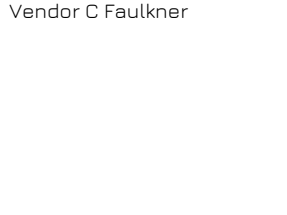
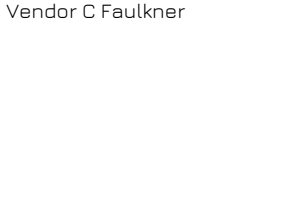


Vendor C Faulkner



Vendor C Faulkner





Vendor C Faulkner

Vendor C Faulkner



Vendor C Faulkner



Vendor C Faulkner



Vendor C Faulkner



Vendor C Faulkner



Vendor C Faulkner



Vendor C Faulkner



Vendor C Faulkner



Vendor C Faulkner



Vendor C Faulkner



Vendor C Faulkner



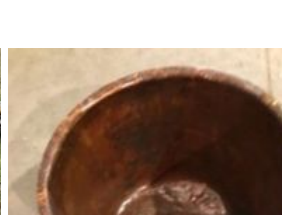
Vendor C Faulkner



Vendor C Faulkner



Vendor C Faulkner





Vendor C Faulkner

Vendor C Faulkner

Vendor C Faulkner

Vendor C Faulkner



Vendor C Faulkner



Vendor C Faulkner



Vendor C Faulkner



Vendor C Faulkner



Vendor C Faulkner



Vendor C Faulkner



Vendor C Faulkner



Vendor C Faulkner



Vendor C Faulkner



Vendor C Faulkner



Vendor C Faulkner



Vendor C Faulkner



Vendor C Faulkner



Vendor C Faulkner



Vendor C Faulkner



Vendor C Faulkner



Vendor C Faulkner



Vendor C Faulkner



Vendor C Faulkner



Vendor C Faulkner



Vendor C Faulkner



Vendor C Faulkner



Vendor C Faulkner



Vendor C Faulkner



Vendor C Faulkner



Vendor C Faulkner



Vendor C Faulkner



Vendor C Faulkner



Vendor C Faulkner



Vendor C Faulkner



Vendor C Faulkner



Vendor C Faulkner



Vendor C Faulkner



Vendor C Faulkner



Vendor C Faulkner



Vendor C Faulkner



Vendor C Faulkner



Vendor C Faulkner



Vendor C Faulkner



Vendor C Faulkner



Vendor C Faulkner



Vendor C Faulkner



Vendor C Faulkner



Vendor C Faulkner



Vendor C Faulkner



Vendor C Faulkner



Vendor C Faulkner



Vendor C Faulkner



Vendor C FAULKNER



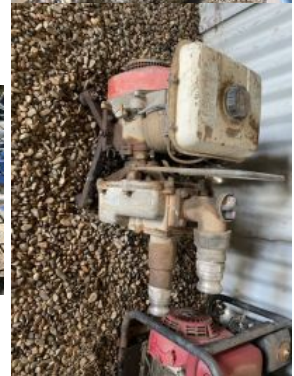
Vendor C FAULKNER



Vendor C FAULKNER









Vendor C Faulkner

Vendor C Faulkner

Vendor C Faulkner



Vendor C Faulkner

Vendor C Faulkner

Vendor C Faulkner

Vendor C Faulkner



Vendor C Faulkner

OUTSIDE ENTRY 1 - TAYLOR

OUTSIDE ENTRY 1 - TAYLOR

OUTSIDE ENTRY 1 - TAYLOR



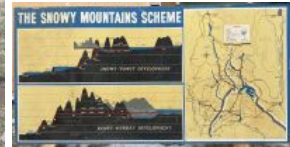
OUTSIDE ENTRY 1 - TAYLOR



OUTSIDE ENTRY 1 - TAYLOR



OUTSIDE ENTRY 1 - TAYLOR



OUTSIDE ENTRY 3 - MARK NORLING



OUTSIDE ENTRY 3 - MARK NORLING



OUTSIDE ENTRY 4 - LEON CLARKE



OUTSIDE ENTRY 4 - LEON CLARKE



OUTSIDE ENTRY 4 - LEON CLARKE



OUTSIDE ENTRY 4 - LEON CLARKE



OUTSIDE ENTRY 4 - LEON CLARKE



OUTSIDE ENTRY 4 - LEON CLARKE



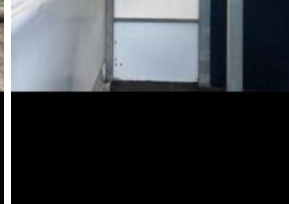
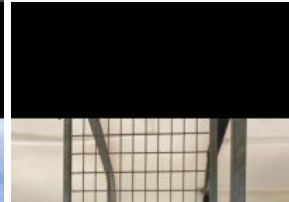
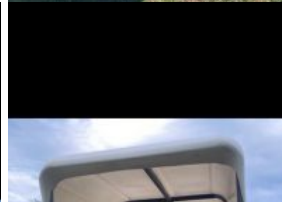
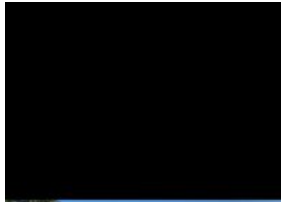
Outside Entry 5 - M D McPhie



Outside Entry 5 - M D
McPhie



Outside Entry 5 - M D
McPhie



Outside Entry - S Reid

Outside Entry - S Reid

Outside Entry - S Reid



Outside Entry - S Reid



Outside Entry - S Reid