

NICK KIRSHNER

Property & Livestock

25TH NOVEMBER 2023 | "BRIDLESDALE" COOMA | NO DOGS PERMITTED

The last sale of 2023 was completed at "Bridlesdale" yesterday. There were 14 vendors, 135 lots and 89 registered bidders!! A great sale to finish of the year with many happy vendors and buyers! See you all again in 2024 !

VENUE	"Bridlesdale" 820 Slacks Creek Road, Cooma NSW 2630
ACCOUNT	W & J Crowe
INSPECT	8am on the the day or as otherwise pre-arranged
REGISTER	8am on the day or via pre-registration To pre-register for this auction, please contact our office, supply a scanned copy of your driver's license.
AUCTION	Commencing at 9am Saturday 25th November 2023
CATERING	Provided
TERMS	Bidding card system ID required
PAYMENT & PICKUP	On the day
PAYMENT METHODS	Cash & Bank Cheque or Personal Cheque (Must be pre-approved). EFTPOS facilities maybe available on the day. To register for pre-approval to pay with a Personal Cheque, please click here .
BUYERS	Please refer to terms and conditions

Disclaimer: We make no representation and give no warranty as to the accuracy of the preceding information and do not accept any responsibility for any errors or inaccuracies in, or omissions from, the information contained herein (whether negligent or otherwise) and we shall not be liable for any loss or damage howsoever arising as a result of any person acting or refraining from acting in reliance on any information contained herein. The above information has been furnished to us by a third party. We have not verified whether or not that information is accurate and do not have any belief one way or the other in its accuracy. We do not accept any responsibility to any person for its accuracy and do no more than pass it on. All interested

parties should make and rely upon their own inquiries in order to determine whether or not this information is in fact accurate. No reader shall rely solely on the information contained in this document as it does not purport to be comprehensive or to render specific advice. This disclaimer does not purport to exclude any warranties implied by law which may not be lawfully excluded.

Please also note that all photographs relating to this sale are INDICATIVE ONLY and do not show how lots will be sold on the day.

Inventory

VEHICLES/BIKES/TRAILERS	Kolt50 Aeon 4-wheeler (kids); Navara Ute Tub; 2 x 4-wheeler new tyres (25 x 10 – 12); 2 x 4-wheeler new tyres (25 x 8 – 12); 1984 Land Cruiser Pass Seat; VW Car (not running, old); Camper trailer
MACHINERY	Caterpillar 428D 2004 Backhoe (approx. 6,6259 hrs); Caterpillar 428D backhoe attachments (4in1 bucket, pallet forks, 3 x rear buckets, 2 x dig buckets, 1 x mud bucket); International TD9 Dozer (power shift, 130 HP, Perkins motor); International TD9 dozer attachments (rippers, tree pusher); Krone V1800MC Fortima Round Baler (net wrap, PTO); John Deer 566 Round Baler (string, PTO); Class Rollant 66 Round Baler (net wrap, PTO); Silvan 3PL Super Spreader (1/2 tonne, gal hopper); New Holland 9ft Mower Conditioner Model 489; International Combine (16 run, small seed box); Sitrex 3PL Hay Rake (6 wheel); Jarrett 3PL 5ft PTO Slasher; Massey Fergusson 55 Steel Wheel Combine; Massey Fergusson Sunshine 500 Rubber Tyre Combine; Lengths Grader Blade;
HORSE SADDLERY	Square bale feeder;
BUILDING MATERIALS, WORKSHOP EQUIPMENT & TOOLS	Cement mixer (petrol Villers motor); Electric air compressor; 3 x Heavy Duty Floor Jacks; 2HP Petrol Generator 750W; Fluro lights; Solid timber door; Selection hand tools; Heavy chain; Steel Cable; Assorted Corrugated Iron; Heavy Rope; Wood Drop Saw; Fire Hoses; Oxy Razor Gas Kit; Onga Pump; Treated Pine Posts/Lengths; Scaffolding; Bricks; Miscellaneous tools;
FARMING EQUIPMENT & MATERIALS	Honda Pneumatic Post Driver (4 stroke, 6 x 35); Round Bale Feeder;
OUTDOOR GARDEN EQUIPMENT	Victa VRX B/S 14.5HP 38" Cut Ride on Mower; 3 x Garden Gates; Whipper snipper;
HOUSEHOLD ITEMS	Freezer; Furniture;
MISCELLANEOUS	Old Tonka Toys; Fish tank; Ferret Cages & Nets;
<u>OUTSIDE ENTRIES</u>	

1. W MOORE	Land Cruiser Tray (suit a 2021 model)
2. TVHR PTY LTD	<p>Isuzu NPR 300 truck, 2002 model with heavy duty Dickinson stock crate. Details below:</p> <p>Truck – unregistered, approx. 516,000km, tare 3,200kg, GVM 6,200kg, used for short transport jobs in the area, new steering tyres, new drivers seat, new power steering pump, new clutch kit and fly wheel [April 2023], new diff [April 2021], tray 2450mm (w) x 4290mm (l), does have engine issues (videos available for viewing)</p> <p>Stock Crate – purchased new 2014, weight approx. 1,020kg, 2 pens for cattle/horses, 2 decks (4 pens) for sheep/goats, hand winch for sheep deck, interior LED light in crate, built in LED reversing light, length – 3940mm, width – 2300mm, height – 2000mm</p>
3. MB DOYLE & LM FLETCHER	3 x Red Gum timber slabs (3.5m long); 1 x Stringy Bark timber slab (3.5m long); 22 x Hardwood sleepers (75mm x 175mm); Hardwood 4x2's; Hardwood weather boards; Hardwood sheep grating; Rotary hoe (gearbox issues)
4. AKUNA PARTNERSHIP	Mitsubishi FK417/1996 Crew Cab - seats 7, Tare Weight 4450/ GVM9700/ GCM 1600, approx. 313,700km, Engine capacity 75000.0, Diesel engine was rebuilt by previous owner at around 300,000km, Heavy duty steel tray 4100mm x 2450mm, Gooseneck hitch, Bullbar, Towbar, Large steel box for tools, tack, feed etc with side and rear access door plus hay rack, Driving lights, UHF radio, Rear seat setup as sleeper currently, Registered 18 January 2024, has been an excellent tow vehicle for owners 4 horse gooseneck, would also suit builder or other trade, Comfortable drive, Only selling due to surplus to current requirements, Regularly serviced; 2 x Lister Nexus Pro overhead gear
5. G MOORE	D22 Nissan Navara 2.5L Diesel Ute – 1 owner, first registered in Jan 2012, bulbar, tow bar, driving lights, winch, UHF radio, electric brakes, 2 inch lift, heavy springs (350kg constant load), builders bars, steel tray, reversing camera, registered util Jan 2024
6. W & M SKINNER	2011 Mitsubishi Triton 4WD Dual Cab 2.5L Diesel Ute (approx. 287,000km, recently rebuilt front diff and drivetrain, needs new head gasket, driveable, registered until 9th November 2023); 5ft PTO slasher (near new condition); 100L spray tank with electric motor hoses and gun

7. THE PURE SET

Iveco Stralis 435 5 Bay Horse Truck with Living – Double bed, table/chairs with internal storage, stove, sink, shower, microwave, new reverse cycle air conditioner/ heater, dishwasher, full sized fridge, ample cupboard space, 15 & 10 amp power, generator, airbag suspension, water via hose & small water tank with external tap, hot water system, push button hydraulic tailgate, rubber and stallion dividers in horse bays, 10 months NSW registration, recently serviced and inspected with various small items fixed, approx. 470,000km, good working order, 12 speed auto/synchro gear box, 2 large tack boxes, trolley/cart storage, 2 external hay feed boxes, 3 large internal feed storage bins, BBQ in own storage, full set steel yards that run length of truck, tie points on both sides, sleeper in rear of cab, full curtains in cab, some new tyres, new batteries; Rocky Mountains 27.5 Mountain bike; Kubota Mower deck (Model RC48-62A); Approx. 180m white horse rail fencing and posts with fittings.

8. D & S SCARLETT

Rotary hoe; Yamaha Electric bike; Kawasaki spray unit and spare tank on frame for back of ute; Polaris 90 Predator 2006 model

9. A MACKAY

Double swag; Wicker wood basket on wheels

10. R HAIN

Stevlyon Rotary 4 lamb cradles; 2 x 10ft Paton Round bale hay feeders

11. G SHELLARD

2012 CLAAS 420 Arion Tractor (recently serviced, new starter motor & battery, approx. 2,100 hours, UHF, 4WD, 100 hp); 2012 Hamm Roller

12. W MACKAY

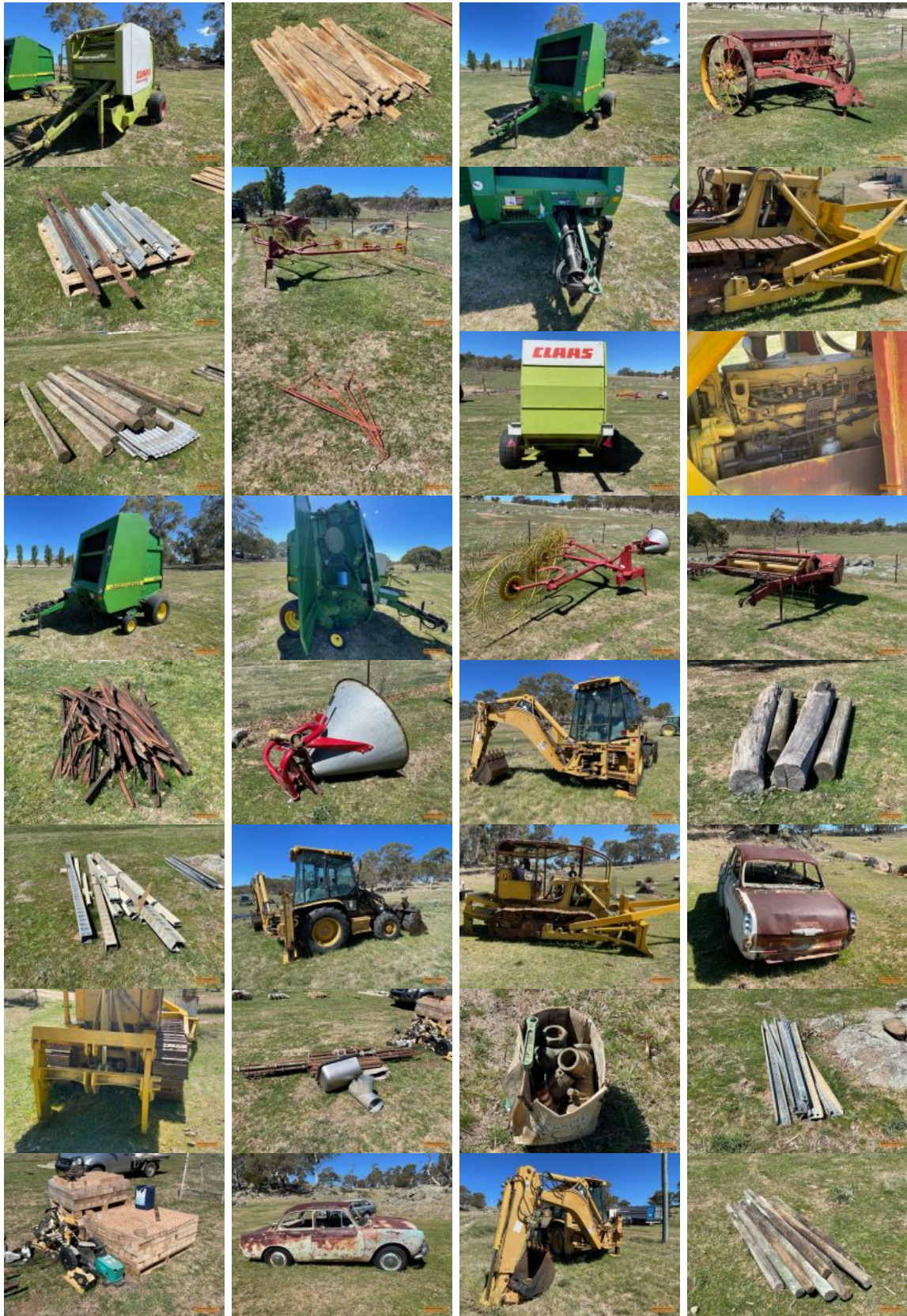
Massey Fergusson 188 Tractor (in good condition); 1999 Holden Rodeo 2.8 Diesel Ute (NSW rego, in good condition); Approx. 300 hexagon pavers; Approx. 500 rectangle pavers

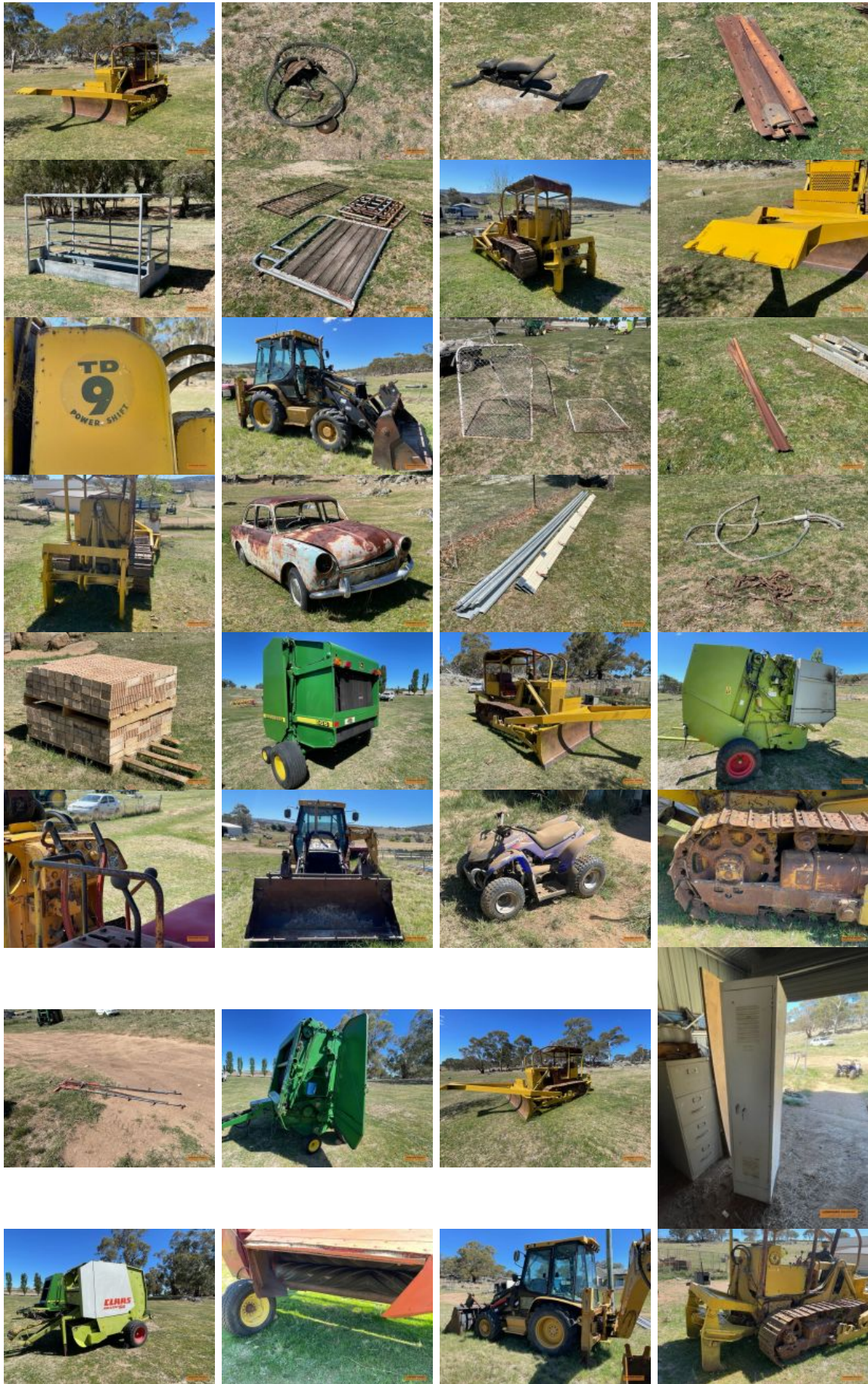
13. B ASHTON

International 756 Tractor

PLEASE NOTE: ALL PHOTOGRAPHS RELATING TO THIS SALE ARE INDICATIVE ONLY AND DO NOT SHOW HOW LOTS WILL BE SOLD ON THE DAY.







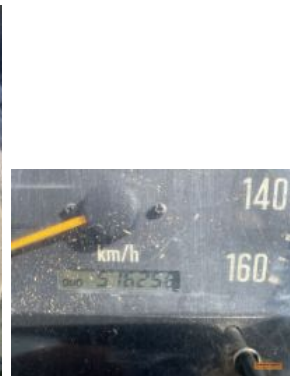


Outside Entry 1 - W
Moore

Outside Entry 1 - W
Moore

Outside Entry 1 - W
Moore

Outside Entry 1 - W
Moore

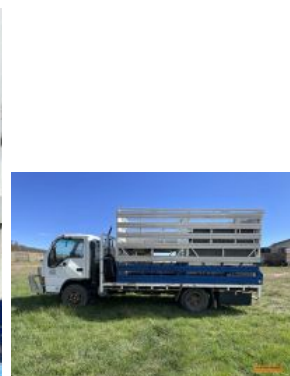


Outside Entry 2 - TVHR
Pty Ltd

Outside Entry 2 - TVHR
Pty Ltd

Outside Entry 2 - TVHR
Pty Ltd

Outside Entry 2 - TVHR
Pty Ltd



Outside Entry 2 - TVHR
Pty Ltd

Outside Entry 2 - TVHR
Pty Ltd

Outside Entry 2 - TVHR
Pty Ltd

Outside Entry 2 - TVHR
Pty Ltd



Outside Entry 2 - TVHR
Pty Ltd



Outside Entry 2 - TVHR
Pty Ltd



Outside Entry 2 - TVHR
Pty Ltd



Outside Entry 2 - TVHR
Pty Ltd



Outside Entry 2 - TVHR
Pty Ltd



Outside Entry 2 - TVHR
Pty Ltd



Outside Entry 2 - TVHR
Pty Ltd



Outside Entry 2 - TVHR
Pty Ltd



Outside Entry 2 - TVHR
Pty Ltd



Outside Entry 2 - TVHR
Pty Ltd



Outside Entry 2 - TVHR
Pty Ltd



Outside Entry 2 - TVHR
Pty Ltd



Outside Entry 2 - TVHR
Pty Ltd



Outside Entry 3 - MB
Doyle & LM Fletcher



Outside Entry 3 - MB
Doyle & LM Fletcher



Outside Entry 3 - MB
Doyle & LM Fletcher



Outside Entry 3 - MB
Doyle & LM Fletcher



Outside Entry 3 - M
Doyle & L Fletcher



Outside Entry 3 - M
Doyle & L Fletcher



Outside Entry 3 - M
Doyle & L Fletcher



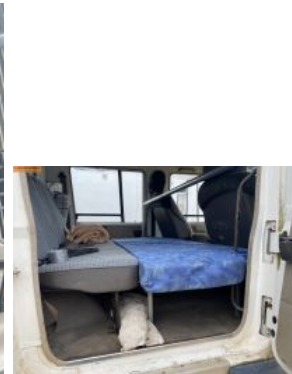
Outside Entry 4 -
Akuna Partnership



Outside Entry 4 -
Akuna Partnership



Outside Entry 4 -
Akuna Partnership



Outside Entry 4 -
Akuna Partnership



Outside Entry 4 -
Akuna Partnership



Outside Entry 4 -
Akuna Partnership



Outside Entry 4 -
Akuna Partnership



Outside Entry 4 -
Akuna Partnership



Outside Entry 4 -
Akuna Partnership



Outside Entry 4 -
Akuna Partnership



Outside Entry 4 -
Akuna Partnership



Outside Entry 4 -
Akuna Partnership



Outside Entry 4 -
Akuna Partnership



Outside Entry 4 -
Akuna Partnership



Outside Entry 4 -
Akuna Partnership



Outside Entry 4 -
Akuna Partnership



Outside Entry 4 -
Akuna Partnership



Outside Entry 4 -
Akuna Partnership



Outside Entry 4 -
Akuna Partnership



Outside Entry 4 -
Akuna Partnership



Outside Entry 4 -
Akuna Partnership



Outside Entry 4 -
Akuna Partnership



Outside Entry 5 - G
Moore



Outside Entry 5 - G
Moore



Outside Entry 5 - G
Moore



Outside Entry 5 - G
Moore



Outside Entry 5 - G
Moore



Outside Entry 5 - G
Moore



Outside Entry 5 - G
Moore



Outside Entry 5 - G
Moore



Outside Entry 5 - G
Moore



Outside Entry 5 - G
Moore



Outside Entry 5 - G
Moore



Outside Entry 5 - G
Moore



Outside Entry 6 - W &
M Skinner



Outside Entry 6 - W &
M Skinner



Outside Entry 6 - W &
M Skinner



Outside Entry 7 - The
Pure Set



Outside Entry 7 - The
Pure Set



Outside Entry 7 - The
Pure Set



Outside Entry 7 - The Pure Set



Outside Entry 7 - The Pure Set



Outside Entry 7 - The Pure Set



Outside Entry 7 - The Pure Set



Outside Entry 7 - The Pure Set



Outside Entry 7 - The Pure Set



Outside Entry 7 - The Pure Set



Outside Entry 7 - The Pure Set



Outside Entry 8 - D & S Scarlett



Outside Entry 8 - D & S Scarlett



Outside Entry 8 - D & S Scarlett



Outside Entry 8 - D & S Scarlett



Outside Entry 8 - D & S
Scarlett



Outside Entry 8 - D & S
Scarlett



Outside Entry 8 - D & S
Scarlett



Outside Entry 8 - D & S
Scarlett



Outside Entry 9 - A
Mackay



Outside Entry 9 - A
Mackay



Outside Entry 9 - A
Mackay



Outside Entry 10 - R
Hain



Outside Entry 10 - R
Hain



Outside Entry 10 - R
Hain



Outside Entry 10 - R
Hain



Outside Entry 10 - R
Hain



Outside Entry 11 - G
Shellard



Outside Entry 11 - G
Shellard



Outside Entry 11 - G
Shellard



Outside Entry 11 - G
Shellard



Outside Entry 11 - G
Shellard



Outside Entry 12 - W
Mackay



Outside Entry 12 - W
Mackay



Outside Entry 12 - W
Mackay



Outside Entry 12 - W
Mackay



Outside Entry 12 - W
Mackay



Outside Entry 12 - W
Mackay



Outside Entry 13 - B
Ashton



Outside Entry 13 - B
Ashton



Outside Entry 13 - B
Ashton