

NICK KIRSHNER

Property & Livestock

29TH APRIL 2023 | "LOUVAIN" NIMMO | COMMENCING AT 9AM

A coolish autumn day to conduct the Louvain clearing sale which attracted a great crowd, 176 which were registered bidders. There were 275 lots sold by our two favourite auctioneers Nick Kirshner and Aaron Mackay supported by the NKPL crew ! The Berridale Lions did an a fabulous job with the catering and sale concluded before the rain started to fall.

VENUE	"Louvain" 40 Nimmo Road, Nimmo NSW 2628
ACCOUNT	Louvain Pastoral
INSPECT	8am on the the day or as otherwise pre-arranged
REGISTER	8am on the day or via pre-registration To pre-register for this auction, please contact our office, supply a scanned copy of your driver's license.
AUCTION	Commencing at 9am Saturday 29th April 2023
CATERING	Provided - Catayarosa
TERMS	Bidding card system ID required
PAYMENT & PICKUP	On the day
PAYMENT METHODS	Cash & Bank Cheque or Personal Cheque (Must be pre-approved). EFTPOS facilities maybe available on the day. To register for pre-approval to pay with a Personal Cheque, please click here .
BUYERS	Please refer to terms and conditions

Disclaimer: We make no representation and give no warranty as to the accuracy of the preceding information and do not accept any responsibility for any errors or inaccuracies in, or omissions from, the information contained herein (whether negligent or otherwise) and we shall not be liable for any loss or damage howsoever arising as a result of any person acting or refraining from acting in reliance on any information contained herein. The above information has been furnished to us by a third party. We have not verified whether or not that information is accurate and do not have any belief one way or the other in its accuracy. We do not accept any responsibility to any person for its accuracy and do no more than pass it on. All interested

Printed 19 May 2024 Page 1 of 14

parties should make and rely upon their own inquiries in order to determine whether or not this information is in fact accurate. No reader shall rely solely on the information contained in this document as it does not purport to be comprehensive or to render specific advice. This disclaimer does not purport to exclude any warranties implied by law which may not be lawfully excluded.

Please also note that all photographs relating to this sale are INDICATIVE ONLY and do not show how lots will be sold on the day.

Inventory

VEHICLES	HINO truck and crate;
RARE UNIQUE ANTIQUES & COLLECTABLES	Coal scuttle;
BUILDING MATERIALS, WORKSHOP EQUIPMENT & TOOLS	Corrugated iron sheets; Lengths of sawn timber; Lengths of W strap; Electric concrete mixer (all terrain); Nuttal flatbed lathe; Stihl 034 Chainsaw; Electric jackhammer; Honda post driver; 5in angle grinder; 12 volt winch; 12 volt sprayer; 225 amp Lincoln welder; Stihl 660 Chainsaw; Endless chain; Drainage pipes; 2 x roller doors;

FARMING EQUIPMENT & MATERIALS	<p>International 574 67hp 2WD Tractor w ROPS; KYMCO UXV700 Buggy (approx. 10,110km); Stevlyon Mini-Matic wool press (good condition); Super spreader 3PL; A1-54 International 3PL 5 disc plough (good condition); Shearer Horwood Bagshaw 7ft seed drill; 4in electric pencil auger; 3PL quick hitch; 3PL bale handler; Burder 6 ft 4in1 bucket; Stock rake/ Log grab (Rata); Post hole digger; 7ft pasture rollers; Massey Fergusson 532 link mower (parts only); Goldacres boom spray unit (600L, 8 metre, 3PL); Weed wiper; Farm trailer; Firewood processor; Log trailer (7 tonne); 3PL Log grab; Wooden droppers; Assorted coils of wire; Box of electric fencing parts; Ute crane for post rammer; Post rammers; Lengths of weldmesh; Billabong electric piston pump; 2 x twin impeller fire pumps; Jetting pump; 3 x grain self feeders; 3 x large square bale hay feeders; 4 x round bale feeders; Large quantity purlin feed troughs; Mobile feed bin; Calf cradle; Gas branding iron setup with burner; Cattle loading ramp (moveable); 22 x panel Harrington portable sheep yards; Lamb marking cradles (x 2 lamb & x 7 lamb); 3 x sheep race panels; Sheep weighing scales; Ram de-horners; Reinforced road stock warning signs; Assorted hand pieces; 12 volt hand piece electric handpiece kit; Cordless rechargeable handpiece; Assorted drench guns; Bale hooks; Wool table; Fleece weighing scales; Cane wool baskets (one very large, one cradle shaped); Hardi backpack sprayer; 100L Silvan spray trailer; Pump float; Haystack wooden ladder; Assorted bags of superphosphate; Heavy drag chain;</p>
FODDER/HAY	<p>83 round bales of fescue pasture hay; 27 canola hay bales (8 x 4 x 3);</p>
OUTDOOR GARDEN EQUIPMENT	<p>Roll of plastic tree guards;</p>
HOUSEHOLD ITEMS	<p>LG dishwasher; 6 seater dining table (fair condition);</p>

FIREARMS

Lanber Under/Over 12 gauge; Remington Model 700 .223 stainless barrel; Browning A5 12 gauge; Lithgow .22 hornet; Mossberg .22 lever action; Lithgow .22 single shot; W. Coatkn Birmingham 12 gauge side by side Damascus barrel;

OUTSIDE
ENTRIES

1. P FISCHER

J.G. Anschutz .22 bolt action rifle; Mauser-Werke model 66 .270 bolt action 1967 rifle

2. R MCKINNEY

Lanber 12 gauge under/over; 5 chokes to fit; Buffalo River padded carry bag;

**3. J & J
HEDGER**

Holden Rodeo 2005 Ute (10 months rego, approx. 209,625km, manual); Jumbuck charcoal pizza oven; Dog crate (opens at both ends); 4 Bridgestone Tyres (245/70R16, brand new); 2 x Selecta 70L Spray Units; Electric Rok Log Splitter; Pipe bender; Fire place guard

4. J MALONEY

Howa 1500 6.5 Creedmoor (Oryx chassis, 10 shot mag, 26 inch barrel, muzzle break, Bushnell AR/6.5 Creedmoor, 4.5 - 18x 40mm, Tactical quick release mounts)

**5. GM & SM
WILLIAMS**

Calf cradle; 3PL bale lifter; Boom spray x 2; Tirfor Winch; Super spreader;

PLEASE NOTE: ALL PHOTOGRAPHS RELATING TO THIS SALE ARE INDICATIVE ONLY AND DO NOT SHOW HOW LOTS WILL BE SOLD ON THE DAY.

















Outside Entry 2 -
R.McKinney

Outside Entry 2 -
R.McKinney

Outside Entry 2 -
R.McKinney



Outside Entry 2 -
R.McKinney

Outside Entry 1 - P
Fischer

Outside Entry 1 - P
Fischer

Outside Entry 1 - P
Fischer



Outside Entry 1 - P
Fischer



Outside Entry 1 - P
Fischer



Outside Entry 1 - P
Fischer



Outside Entry 1 - P
Fischer



Outside Entry 3 - J & J
Hedger



Outside Entry 3 - J & J
Hedger



Outside Entry 3 - J & J
Hedger



Outside Entry 3 - J & J
Hedger



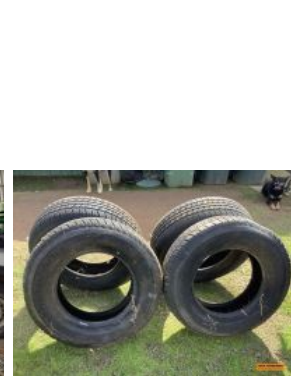
Outside Entry 3 - J & J
Hedger



Outside Entry 3 - J & J
Hedger



Outside Entry 3 - J & J
Hedger



Outside Entry 3 - J & J
Hedger



Outside Entry 3 - J & J
Hedger



Outside Entry 3 - J & J
Hedger



Outside Entry 3 - J & J
Hedger



Outside Entry 3 - J & J
Hedger



Outside Entry 3 - J & J Hedger



Outside Entry 4 - J Maloney



Outside Entry 5 - GM & SM Williams



Outside Entry 5 - GM & SM Williams



Outside Entry 5 - GM & SM Williams



Outside Entry 5 - GM & SM Williams



Outside Entry 5 - GM & SM Williams



